

Online ISSN: 2682-2628  
Print ISSN: 2682-261X

# IJC CBR

INTERNATIONAL JOURNAL OF  
CANCER AND BIOMEDICAL RESEARCH

<https://jcbr.journals.ekb.eg>

Editor-in-chief

Prof. Mohamed Labib Salem, PhD

**Role of expression of p53 and Ki67 in the  
progression of Wilms tumor: Correlation with  
patients' survival**

Ahmad Darwish, Heba Sheta and Doaa Alemam



PUBLISHED BY

**EACR** EGYPTIAN ASSOCIATION  
FOR CANCER RESEARCH

Since 2014

## **Welcome letter from Editor-in-Chief**



Welcome to the Int J Cancer and Biomedical Research (IJCBR)!

It is with great pleasure that I write this editorial to welcome you to the IJCBR. This journal provides a platform for publication of original and reviews research articles, short communications, letter to editor, thesis abstract, conference report, and case studies. These types of publication are directed at the interface of the fields of cancer and biomedical research.

The IJCBR relies on a distinguished expert of the Advisory and Editorial Board Members from the top international league covering in depth the related topics. They timely review all manuscripts and maintain highest standards of quality and scientific methodology and ethical concepts. Meanwhile, we take all possible means to keep the time of the publication process as short as possible.

I take this chance to welcome your contributions to the IJCBR and have every expectation that it will soon become one of the most respected journals in both the fields of cancer and biomedical research.

A handwritten signature in blue ink that reads "Mohamed L. Salem". The signature is fluid and cursive.

**Mohamed L. Salem,**

Editor in Chief

## Role of expression of p53 and Ki67 in the progression of Wilms tumor: Correlation with patients' survival

Ahmad Darwish<sup>1</sup>, Heba Sheta<sup>2</sup> and Doaa Alemam<sup>3</sup>

<sup>1</sup>Pediatrics Department, Faculty of Medicine, Mansoura University, Egypt

<sup>2</sup>Pathology Department, Faculty of Medicine, Mansoura University, Egypt

<sup>3</sup>Public Health and Community Department, Faculty of Medicine, Mansoura University, Egypt

### ABSTRACT

**Background:** Wilms tumor (WT) is the most frequent renal tumor of childhood and is a highly responsive tumor to chemotherapy. P53 and ki67 are two of the most important markers that have been evaluated in many cancers. The role of p53 in the pathogenesis and progression of WT is only partly understood. Over the past decade, the importance of Ki-67 in the prognosis of breast cancer has been widely studied. On the other hand, fewer studies are available for this in WT. **Aim:** To study the possible role of p53 and ki67 in the progression and outcome of Wilms tumor cases. **Methods:** Immunohistochemical (IHC) staining for p53 and ki67 were done and correlated with clinicopathological data of Wilms tumor cases. **Results:** There was a positive correlation between p53 and ki67 expression and unfavorable histology, higher tumor stage, shorter disease-free survival (DFS) and overall survival (OS). **Conclusion:** Ki67 and p53 expression was positively correlated with aggressive behavior of Wilms tumor.

**Keywords:** Wilms tumor, anaplasia, p53, ki67.

Editor-in-Chief: Prof. M.L. Salem, PhD - Article DOI: 10.21608/jcbr.2021.46401.1081

### ARTICLE INFO



#### Article history

Received: October 14, 2020

Revised: December 28, 2020

Accepted: January 11, 2021

#### Correspondence to:

**Dr. Heba A. Sheta, MD**

Pathology Department, Faculty of

Medicine, Mansoura University,

Mansoura, Egypt

Tel.: +201102000054

Email: heba\_sheta@yahoo.com

### INTRODUCTION

Primary renal tumors account for 4–7% of all childhood cancers. In the Western world, Wilms tumor (WT) or nephroblastoma represents about 90% of these cases. Renal tumors are common in children aged less than 4 years but their relative frequency decreases in older age groups (Steliarova-Foucher et al., 2017). According to the cancer pathology registry, national cancer institute, Cairo University; nephroblastoma represents 31.03% of renal neoplasms (Mokhtar et al., 2016). Moreover, the incidence of Wilms tumor in Africa based on WHO data for children ages 0-14 y., reported an incidence of 6 per million in Egypt (Cunningham et al., 2020).

Treatment modalities of WT include surgery, chemotherapy and, for some patients, radiotherapy. Long-term cure rates have improved to >90% with the introduction of multimodal treatment (Brok et al., 2016). Tumor histology either favorable or unfavorable and tumor stage are the main determining

factors of chemotherapy protocol of WT (Oostveen and Pritchard-Jones, 2019). Despite the excellent prognosis for most children with WT, about 15% of patients will relapse, usually within 2 years of diagnosis (Pritchard-Jones et al., 2015). Furthermore, a proportion of patients will display severe early and late treatment-related complications, e.g. cardiotoxicity secondary to doxorubicin or radiotherapy-induced organ dysfunction, musculoskeletal abnormalities, infertility and secondary malignancies (Termuhlen et al., 2011). Therefore, the identification of ideal cost-effective prognostic markers that reduce these complications would be beneficial (Krishna et al., 2016).

Wilms tumor represents a genetically heterogeneous group, displaying a high degree of intra-tumoral heterogeneity (Malogolowkin et al., 2008). The tumor suppressor marker p53 and tumor proliferation marker (Ki67) are two of the most important markers that have been evaluated in many cancers. Ki67 is a nuclear

antigen associated with cell proliferation which is present throughout the cell cycle and is absent in resting cells (Berrebi, 2008).

The p53 tumor suppressor gene (Tp53) is located on chromosome 17p13.1. In a normal healthy cell, P53 behaves as a multifunctional transcription factor involved in the control of the cell cycle, programmed cell death, senescence, differentiation, deoxyribonucleic acid (DNA) replication and DNA repair. p53 prevents neoplastic transformation by three interlocking mechanisms: activation of temporary cell cycle arrest (quiescence), induction of permanent cell cycle arrest (senescence), or triggering of programmed cell death (apoptosis) (Wei et al., 2006).

The role of p53 in the pathogenesis and progression of WT is only partly understood. The significance of p53 expression in WT is conflicting. Several studies have been carried out to determine the role of this protein expression as a prognostic factor in patients harboring WT. Some of these studies have confirmed the correlation of TP53 overexpression with anaplasia and prognosis in WT (Franken et al., 2013; Ooms et al., 2016); others revealed no correlation between p53 and Wilms tumor development (Krishna et al., 2016). Over the past decade, the importance of Ki67 prognosis of breast cancer has been widely studied as regard prognosis and treatment (Abubakar et al., 2019). On the other hand, with respect to WT, several studies are conducted (Menon et al., 2019).

## PATIENTS AND METHODS

### Patients

This is a retrospective study including 38 patients with Wilms tumor who were presenting to the pediatric oncology unit, Oncology Center-Mansoura University-OCMU, from January 2010 to July 2018. Formal consent was obtained from the children's guardians/parents before data and sample collection. This study was approved by the Institutional Review Board (IRB code no: R/18.08.258).

### The study groups

The International Society of Pediatric Oncology treatment policy of patients with WT was followed for our cases. This included

preoperative chemotherapy then followed by surgery and further chemotherapy with or without radiotherapy, if necessary. Histologically, three risk groups are identified (a) low risk (cystic partially differentiated nephroblastoma), (b) intermediate-risk (regressive, epithelial, stromal, or mixed), and (c) high risk (blastemal or diffuse anaplasia). A diagnosis of anaplasia was made according to National Wilms' Tumor Study Group criteria (Beckwith, 1983).

Clinical data were obtained from the patient's clinical sheets including the patient's age, gender, tumor stage & tumor recurrence if present. Hematoxylin & Eosin (H&E) slides were reviewed to confirm the diagnosis and assess other histopathological parameters such as anaplasia and blastemal predominant histology by blinded review. Exclusion criteria include complete necrosis of the tumor following chemotherapy and incomplete clinical data.

### Immunohistochemistry

Immunohistochemical staining of the formalin-fixed, paraffin-embedded tissue sections (4- $\mu$ m thick) was performed following the technique of Hsu et al., 1981). Immunohistochemical staining was done of resection specimens. Epitope retrieval was performed with the use of heat-induced epitope retrieval technique using Cell Marque triology in conjunction with a pressure cooker. Each antibody was supplied in a concentrated form (Genemed; Biotechnologies, Mouse monoclonal anti-p53, clone BP-53-12; Mouse monoclonal anti-ki67, clone GM010) and diluted in the ratio of 1:100 in Phosphate-buffered saline. Then, they were incubated with UltraVision One AP Polymer for 30 min at room temperature. Then, subsequent ordinary steps were performed. Only cases with clear nuclear staining for p53 and ki67 were considered positive. ki67 was graded as low, moderate, and high. The expression of proliferation index Ki-67 is categorized into 3 groups: low (Ki-67  $\leq$ 15%), moderate (Ki-67:16-30%), and high (Ki-67 > 30%) according to the recommendations of the St Gallen International Consensus of Experts (Goldhirsch et al., 2011). Immunohistological upregulation of p53 was noted to be present if 20% or more of the nuclei stained positive (Krishna et al., 2016).

## Statistical analysis

Data were analyzed using the Statistical Package of Social Science (SPSS) program for Windows (Standard version 21). The normality of data was first tested with a one-sample Kolmogorov-Smirnov test. Qualitative data were described using the number and percent. Association between categorical variables was tested using Chi-square test while Fischer exact test and Monte Carlo test were used when expected cell count less than 5.

Continuous variables were presented as mean  $\pm$  standard deviation for parametric data and median for non-parametric data. The two groups were compared with the Student t-test for parametric data and Mann Whitney test for non-parametric. ANOVA test was used to compare more than 2 means, while Kruskal-Wallis test was used to compare more than 2 medians.

Cox regression analysis was used to predict the most significant determinants of predictors of mortality among significant variables on univariate analysis using the enter statistical technique. Survival analysis was tested by Kaplan-Meier and Log-rank test to determine the statistical significance of differences among curves. For all above mentioned statistical tests done, the threshold of significance is fixed at  $\leq$  5% level (p-value).

## RESULTS

### Study group

In total, 38 cases of Wilms tumor were identified from hospital records between January 2010 to July 2018. Two cases were excluded due to defective medical reports and another 2 cases were due to complete necrosis of the tumor after receiving chemotherapy.

### Clinicopathological criteria

The clinicopathological features of the studied patients are listed in Table 1. There was a female predominance (64.7%). Age at presentation ranged from 1 to 13 years with a median age of 3 years. Clinical presentations were variable, with abdominal mass being the most common (73.5%), followed by incidentally discovered (32.4%), hematuria (20.6%) and abdominal pain (20.6%). Distribution of the

tumor stage was 38.2% for stages I and II, 61.8% for stages III and IV. About 60% of the cases were left-sided. Of the studied 34 cases, 15 (44.1%) cases were alive at the end of the current study, and 19 (55.9%) succumbed to the disease. As regard tumor characteristics, the tumor size mean was 10.67 cm. The predominant histology was the triphasic histology (97.1%) in the form of blastemal, epithelial, and mesenchymal elements (Figure 1d). There was predominance for favorable histology 65% (Figure 1d) as compared to 35% of the cases that showed anaplasia; either focal or diffuse (Figure 1a).

### Immunohistochemical expression and correlation with patients' clinicopathological parameters

Regarding p53 immunoreactivity, about 60% of the studied cases showed a positive reaction (Fig. 1b), as compared to 40% with a negative reaction (Fig. 1e). When comparing p53 expression with histology, all tumors with unfavorable histology showed a positive reaction for p53. In respect to tumors with favorable histology, 68.2% showed negative reactions while only 31.8% of these tumors were positives ( $p < 0.001$ ). Moreover, there was a positive correlation between p53 positivity and the presence of abdominal pain ( $p = 0.011$ ), higher tumor stage ( $p = 0.002$ ), and higher Ki67 immunoreactivity ( $p < 0.001$ ). Moreover, there was a significant relation between positive p53 expression and decreased both overall survival and disease-free survival of our studied cases (Figure 2a,b).

Regarding ki67 immunoreactivity; 29.4% showed mild positive reaction for ki67, 35.3% showed moderate reaction (Fig. 1f) and the same percentage showed high reaction (Fig. 1c). Moreover, there was a positive correlation between increased ki67 positivity and higher tumor stage ( $p = 0.002$ ), higher risk group ( $p = 0.005$ ) and higher p53 immunopositivity ( $p = 0.014$ ). When comparing ki67 expression with histology, 66.7% of tumors with unfavorable histology showed high ki67 expression in comparison to 8.3% that showed low expression. On the other hand, only 18.2% of tumors with favorable histology showed high expression with an equal percentage for low

and moderate expression (each represented 40.9%) ( $p=0.014$ ). As noted in p53, there was a significant relationship between increased ki67 expression and decreased both overall survival and disease-free survival of our studied cases (Figure 2c,d).

**Table 1.** Descriptive data of the studied cases.

Variables	Total (n=34)
Age/ year; Median (Min-Max)	3.00 (1-13)
Sex, n (%)	
Male	12 (35.3)
Female	22 (64.7)
<b>Clinical Presentation, n (%)</b>	
Abdominal mass	25 (73.5)
Hematuria	7 (20.6)
Abdominal pain	7 (20.6)
Accidental	11 (32.4)
Tumor stage, n (%)	
Stage 1 & 2	13 (38.2)
Stage 3 & 4	21 (61.8)
Laterality, n (%)	
Left	19 (55.9)
Right	15 (44.1)
Tumor Size (cm); Mean $\pm$ SD	10.67 $\pm$ 3.30
Histology, n (%)	
favorable	22(64.7)
unfavorable	12(35.3)
Histologic subtype, n (%)	
Triphasic	33(97.1)
Blastema only	1(2.9)
Risk group, n (%)	
low	1(2.9)
intermediate	28(82.4)
high	5(14.7)
Recurrence, n (%)	7 (20.6)
Mortality, n (%)	
Died	19(55.9)
Survived	15(44.1)
P53, n (%)	
Negative	15(44.1)
Positive	19(55.9)
ki67, n (%)	
Mild	10 (29.4)
Moderate	12(35.3)
high	12(35.3)

The relationships between the p53 and ki67 expression and clinicopathological data of the studied cases were represented in Table 2. By applying multivariate Cox regression analysis to test the prognostic yield of these prognostic factors; higher tumor stage ( $p=0.025$ ), p53 positivity ( $p=0.001$ ) and high ki67 positivity ( $p=0.007$ ) were independent predictors of mortality (Table 3).

## DISCUSSION

In this study, 34 cases of WT were studied. The male to female ratio was 1:1.8. This result is in discordance with most of the previous studies in which there was male predominance that ranged from 1.1 to 2 (table 4). However, other studies that reported female predominance like our study (Krishna et al., 2016). Age at presentation was wide-ranged from 1-13 years with median age of 3 years which is in concordance with some previous studies (Sredni et al., 2001; Mitchell et al., 2006; Chan et al., 2014). On the other hand, other studies reported lower mean age at presentation (Trehan et al., 2012; Sangkhathat et al., 2018) and others reported higher age (Anyanwu et al., 2015; Pribnow et al., 2017). High age at presentation may be attributed to the late age of presentation of the patient to the health care center, especially in less developed countries (Cunningham et al., 2020). The most common clinical presentation was abdominal mass (73.5%). This result was in concordance with other studies (Levitt et al., 2012; Illadea et al., 2018; Seminara et al., 2019).

About tumor laterality, all cases were unilateral with about 60% being left-sided. This contrasted with the study conducted by Seminara, et al. 2019 that found more prevalent right-sided tumors of their studied cases (57%) (Seminara et al., 2019). Right-sided predominance was also observed by Tang et al. (2019) (Tang et al., 2019). Moreover, there was predominance for higher tumor stages (Stage III and IV). These findings are like some studies (Sredni et al., 2001; Jadali et al., 2011; Salama and Kamel , 2011). However, patients of other studies were presented in earlier stages (Beniers et al.,2001; Skotnicka-Klonowicz et al., 2002; Franken et al., 2013; Krishna et al., 2016).

The high percentage of stages III and IV in the present study may be attributed to the lack of awareness by general practitioners of the probability of cancer and later presented with a more advanced stage in the tertiary hospital (Cunningham et al., 2020). Also, this late presentation may be the cause of the high mortality rate of our patients (about 60%). As regard to tumor characteristics, the tumor size mean was 10.67 cm.

**Table 2.** Relation between p53 and ki67 expression and clinicopathological data of the studied cases.

Variables	P53			Ki67			p-value
	P53 positive (n=19)	P53 negative (n=15)	p-value	Mild (n=10)	Moderate (n=12)	Severe (n=12)	
<b>Age (year)</b> <b>Median (Min-Max)</b>	3.00 (1-10)	3.00 (1-13)	0.609	3.00 (1-13)	3.00 (1-11)	3.00 (1-10)	0.842
<b>Sex, n (%)</b>			0.610				0.648
Male	6(31.6)	6(40)		4(40)	3(25)	5(41.7)	
Female	13(68.4)	9(60)		6(60)	9(75)	7(58.3)	
<b>Clinical presentation, n (%)</b>	13(68.4)	12(80)	0.447	9(90)	9(75)	7(58.3)	0.243
Abdominal mass							
Hematuria	6(31.6)	1(6.7)	0.104	1(10)	2(16.7)	4(33.3)	0.370
Abdominal pain	7(36.8)	0(00)	0.011*	4(40)	2(16.7)	1(8.3)	0.172
Accidental	7(36.8)	4(26.7)	0.529	4(40)	3(25)	4(33.3)	0.752
<b>Tumor stage, n (%)</b>	3(15.8)	10(66.7)	0.002*	7(70)	6(50)	0(0)	0.002*
Stage 1 & 2	16(84.2)	5(33.3)		3(30)	6(50)	12(100)	
Stage 3 & 4							
<b>Laterality, n (%)</b>							
Left	12(63.2)	7(46.7)	0.336	4(40)	6(50)	9(75)	0.226
Right	7(36.8)	8(53.3)		6(60)	6(50)	3(25)	
<b>Tumor Size, Mean ± SD</b>	10.94±3.56	10.33±3.03	0.599	10.60±3.27	9.83±3.04	11.58±3.62	0.444
<b>Recurrence, n (%)</b>	6 (31.6)	1(6.7)	0.104	0(0)	2(16.7)	5(41.7)	0.051
<b>Histology, n (%)</b>							0.014*
favorable	7(36.8)	15(100)	<0.001*	9(90)	9(75)	4(33.3)	
unfavorable	12(63.2)	0(0)		1(10)	3(25)	8(66.7)	
<b>Histologic subtype, n (%)</b>			1				1
Triphasic	18(94.7)	15(100)		9(90)	9(75)	4(33.3)	
Blastema only	1(5.3)	0(0)		1(10)	3(25)	8(66.7)	
<b>Risk group, n (%)</b>							
low							
intermediate	0(0)	1(6.7)	0.052	1(10)	0(0)	0(0)	0.005*
high	14(73.7)	14(93.3)		9(90)	12(100)	7(58.3)	
	5(26.3)	0(0)		0(0)	0(0)	5(41.7)	
<b>ki67, n (%)</b>	1(5.3)	9(60)	<0.001*	<b>p53,n(%)</b>	9(75)	4(33.3)	0.014*
Mild	6(31.6)	6(40)		Positive	3(25)	8(66.7)	
Moderate	12(63.2)	0(0)		9(90)			
High				Negative			
				1(10)			

Abbreviations: N, number; SD, standard deviation.

Tang et al. reported a predominance of cases with large tumor size > 7 cms, like our finding (Tang et al., 2019). Triphasic histology was the predominant histology (97.1%). About 35% showed anaplasia; either focal or diffuse. Percentages of unfavorable histology were variable among previous studies (Table 4).

A high percentage of anaplasia in our study may be due to the aggressive behavior of our cases that was presented also by a higher percentage of Stage III and IV. This may be due to the late

presentation of the studied cases to our oncology center.

In respect to p53 immunostaining, about 56% of cases showed a positive reaction for p53. In the previous studies, p53 positivity among studied cases ranged from 8% to 60.3% (Table 4). Moreover, p53 immunoreactivity in the current study was significantly associated with the presence of abdominal pain, unfavorable tumor histology, higher tumor stage and higher ki67 immunostaining.

**Table 3.** Cox regression analysis of independent predictors of mortality

Independent predictor	$\beta$	P - value	HR (95%CI)
Tumor stage Stage 1 & 2 (r) Stage 3 & 4	1.727	0.025*	5.6 (1.2-25)
Recurrence Yes No (r)	-0.662	0.440	0.51 (0.09-2.8)
P53 Positive Negative (r)	3.06	0.001*	21.3 (3.6-74)
ki67 Mild (r)	-	-	1
Moderate	1.72	0.08	5.6 (0.8-38)
High	2.99	0.007*	20 (2.3-75)

CI: confidence interval; HR, Hazard ratio; r, reference.

**Table 4.** Previous studies that were examined the role of p53 IHC in Wilms tumor cases.

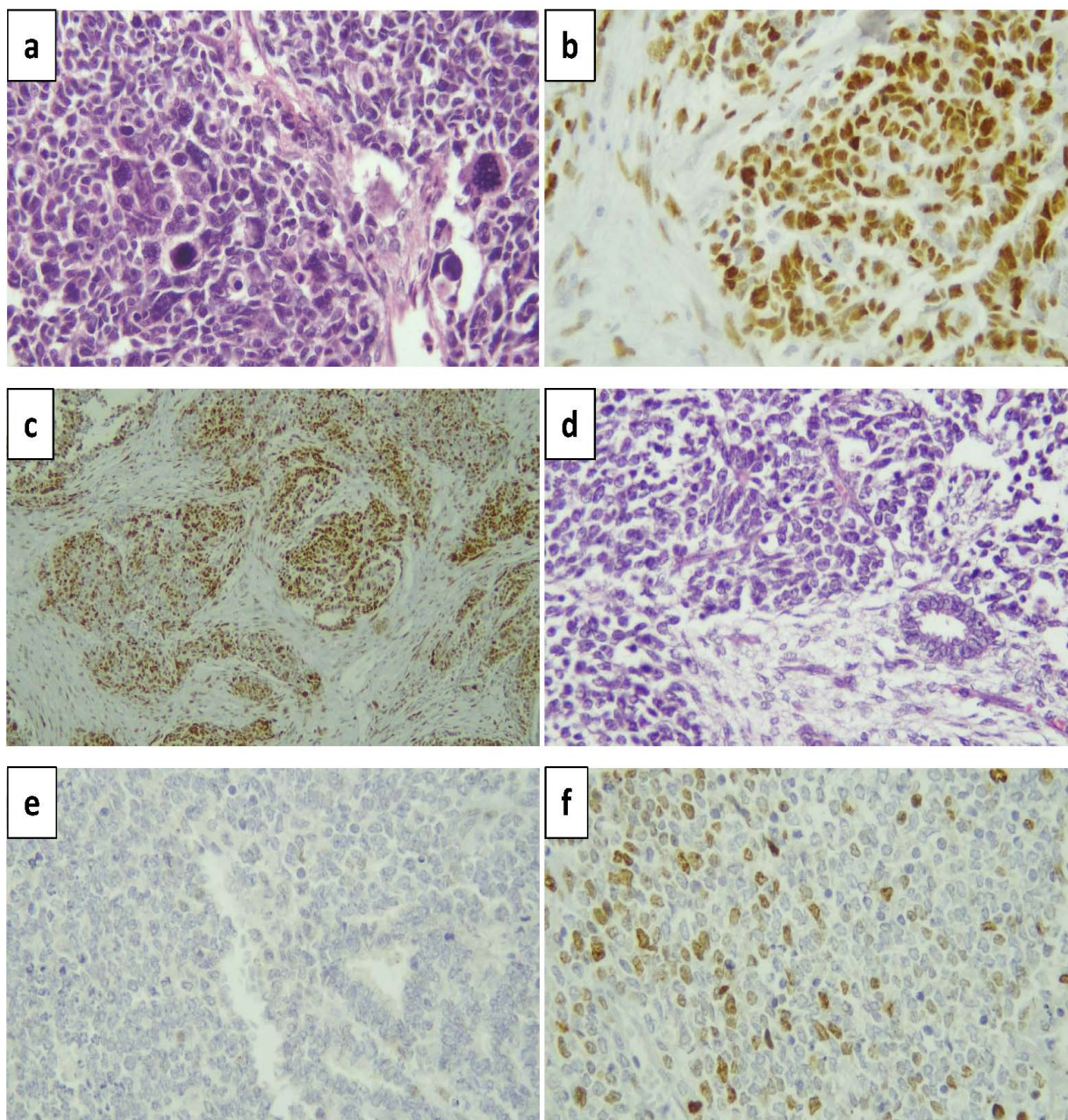
Ref.	NO of cases	Age	M:F ratio	Stage I, II (%)	Stage III, IV (%)	Unfavorable histology (%)	P53 positivity (%)	Correlation with unfavorable histology	Correlation with higher stage	Correlation with poor survival
Cheah et al., 1996	38	1m-6y	1.2:1	NA	NA	5.3	36.8	Yes	No	No
Lahoti et al., 1996	28	4-120m	2:1	50	50	50	60	Yes	Yes	Yes
Govender et al., 1998	93	4m-14ys (3.7)	1:1.1	43	57	7.5	8.6	Yes	Yes	Yes
Beniers et al., 2001	21	44(2-132)	1.1:1	66.7	33.3	19	33.3	Yes	borderline	Yes
Skotnicka-Klonowicz et al., 2001)	61	39m (2d-13ys)	1.1:1	63.9	36.1	18	37.7	Yes	Yes	Yes
Sredni et al., 2001	97	3ys (1m-21ys)	1:1.1	47.4	52.6	7.2	13.4	No	Yes	Yes
D'Angelo et al., 2003	63	3(1-8)	NA	NA	NA	10	8	Yes	No	No
Salama and Kamel, 2011	63	NA	1:1	34.9	65.1	6.4	60.3	Yes	Yes	Yes
Jadali et al., 2011	44	36(4-96)	1.43:1	43.2	56.8	25	54.7	Yes	No	Yes
Franken et al., 2013	48	3.75 (3-9.1)	1.1:1	79.2	20.8	8.3	NA	Yes	Yes	Yes
Krishna et al., 2016.	31	3-8	1:1.8	90.3	0.7	29	NA	No	No	No

Abbreviations; M, month; NA, not available; ys, years

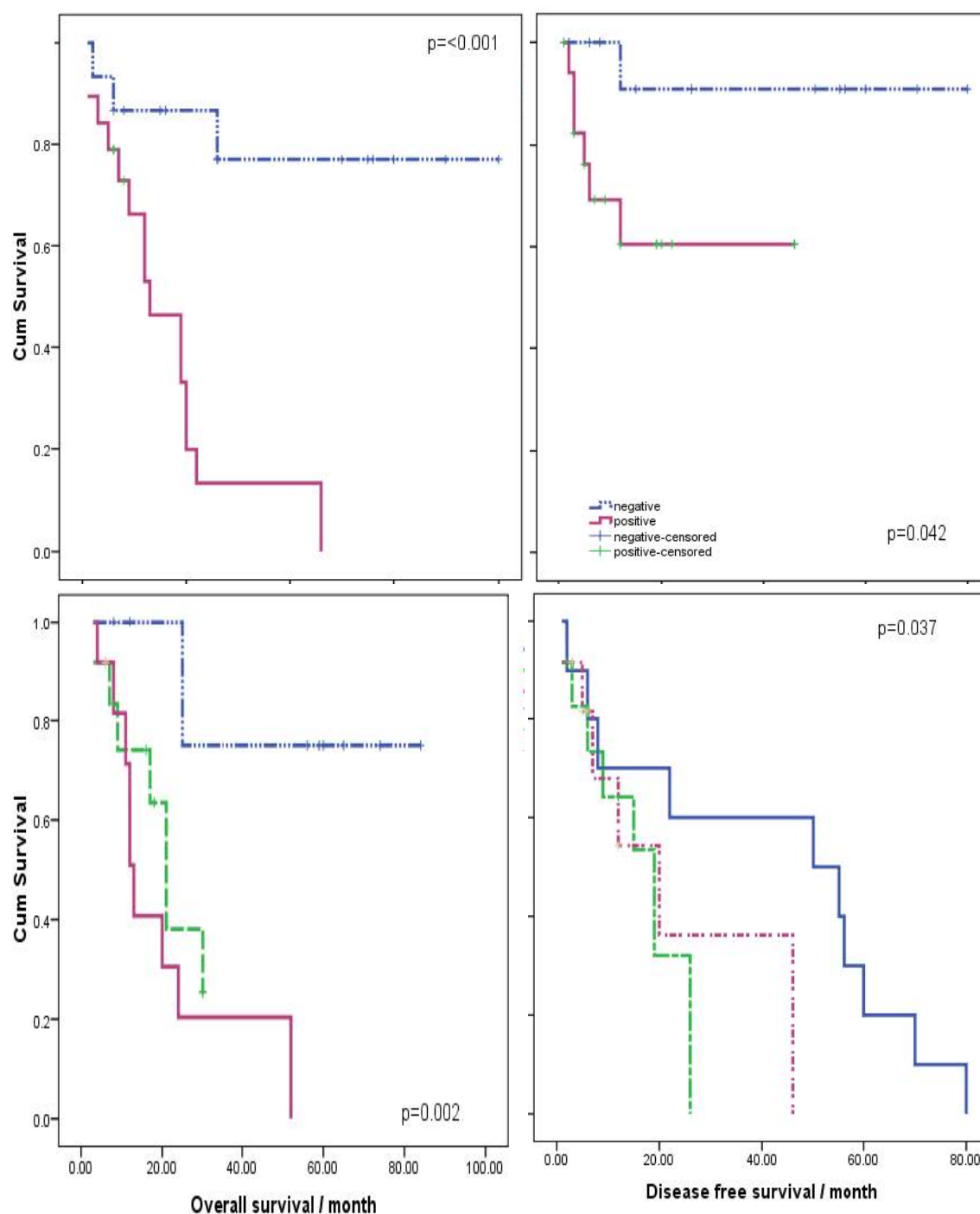
The positive relation between p53 expression and the presence of abdominal pain may be explained by that Increased p53 expression which is caused by mutation of Tp53 gene enables accumulating mutation (Rivlin et al., 2011). This in turn causes increased tumor aggressiveness, tumor size or intratumoral hemorrhage that causes stretching of the renal capsule ( Davidoff et al., 1998). This is may be a

possible cause of pain. The positive relation between positive p53 expression and unfavorable tumor histology was observed by most of the reviewed previous studies except for (Sredni et al., 2001; Krishna et al., 2016). This finding is logical because Tp53 mutation allows the accumulation of other mutations that give the nuclei more atypical morphology and more frequent atypical mitoses.





**Figure 1.** Immunohistochemical data (a) A case of Wilms tumor with unfavorable histology (diffuse anaplasia) that shows an increase in the greatest nuclear dimension at least three times that of adjacent nuclei of the same cell type, nuclear hyperchromasia and abnormal multipolar mitotic figures (H&E x400). (b) A case of Wilms tumor with unfavorable histology (diffuse anaplasia) that shows an immunohistochemical nuclear positivity for p53 (p53 x400). (c) A case of Wilms tumor with unfavorable histology (diffuse anaplasia) that shows a high immunohistochemical nuclear positivity for ki67 (ki67 x200). (d) A case of Wilms tumor with favorable histology that shows a favorable histology formed of blastemal, epithelial and mesenchymal elements (triphasic histology) (H&E x400). (e) A case of Wilms tumor with favorable histology that shows an immunohistochemical negativity for p53 (p53 x400). (f) A case of Wilms tumor with favorable histology that shows a moderate positive nuclear reaction for ki67 (ki67 x400).



**Figure 2.** (a) Kaplan-Meier survival curve for overall survival among patients with Wilms tumor stratified by the positive or negative expression of p53. (b) Kaplan-Meier survival curve for disease-free survival among patients with Wilms tumor stratified by the positive or negative expression of p53. (c) Kaplan-Meier survival curve for overall survival among patients with Wilms tumor stratified by low, moderate and high expression of ki67. (d) Kaplan-Meier survival curve for disease-free survival among patients with Wilms tumor stratified by low, moderate and high expression of ki67.

This is because p53 protein in a normal cell is the gate keeper of the cell cycle that prevent mutation or induce apoptosis via caspase activation (Rivlin et al., 2011). Also, a positive relation was observed between positive p53 expression and higher tumor stage was observed by previous studies (Lahoti et al., 1996; Govender et al., 1998; Skotnicka-Klonowicz et al., 2002) and not observed by others (Cheah et al., 1996; D'Angelo et al., 2003; Krishna et al., 2016). This difference may be due to the different sample sizes among different studies. Also, there was a positive correlation between p53 positivity and shorter disease-free survival and overall survival. So, by proving this association; target therapy may be beneficial to improve the survival of Wilms tumor cases. Like relation with tumor stage, there was a discrepancy about the relation between p53 expression and patient survival.

Most of the previous studies regarding the p53 immunoreactivity in WT are shown in (table 4). This variation in different studies could be attributed to a) different antibodies and staining techniques used, b) different thresholds for calling a sample p53 positive, c) different degrees of anaplasia in the samples or selection of areas with known anaplasia to be stained. It is also positive that p53 is upregulated in areas of tumor hypoxia or necrosis.

Over the past decade, the importance of Ki-67 in the prognosis of breast cancer has been widely studied and established, however fewer studies and literature are available in the context of renal cancer which has an increasing incidence (Beckwith, 1983). Regarding ki67 immunoreactivity in the current study, 29.4% shows a mild reaction, 35.3% shows moderate reaction and the same percentage shows a severe reaction.

Several studies investigated the relationship between the immunohistochemical expression of ki67 and clinicopathological parameters of Wilms tumor cases. Several studies reported that ki67 positivity is associated with higher tumor stage: like the results of the present study (Juszkiewicz, 1997; Das et al., 2012; Krishna et al., 2016). Moreover, our study proved a positive relation between increased

ki67 positivity and shorter disease-free survival and overall survival which is reported also by other studies (Ghanem et al., 2005; Diniz et al., 2011). However, Jurić et al. reported that Ki-67 is a relevant marker for assessing the proliferative activity and tumor cell dynamics of nephroblastoma, but it may not be a good clinical prognostic marker (Jurić et al., 2010). By applying multivariate Cox regression analysis to test the prognostic yield of our detected prognostic factors; higher tumor stage ( $p=0.025$ ), p53 positivity ( $p=0.001$ ) and high ki67 positivity ( $p=0.007$ ) were independent predictors of mortality (table 3). The tumor stage was reported to be an independent prognostic factor by many studies (Sonn et al., 2008; Davidoff, 2009; Tang et al., 2019).

## CONCLUSION

Ki67 proliferative marker and p53 mutated protein has an important role in Wilms tumor prognosis.

**Study limitations:** small sample size is one of the present study limitations. The other limitation was the lack of genetic testing for p53 gene mutation due to financial limitation.

**Future prospective or recommendations** include doing more studies regarding this point of research on a larger sample size including multiple health care centers in Egypt. The aim will be to study the possible role of mutant p53 protein in the progression of Wilms tumor. If this role has been proved, targeting this mutant protein may improve the prognosis of Wilms tumor cases that are resistant to conventional chemotherapy. The same is for ki67.

## Abbreviations

DFS	Disease free survival
DNA	deoxyribonucleic acid
H&E	Hematoxylin & Eosin
IHC	Immunohistochemical
OS	Overall survival
Tp53	p53 tumor suppressor gene
WT	Wilms tumor

## CONFLICT OF INTEREST

All authors declared no conflicts of interest.

## FUNDING

No fund was received for this work.

## REFERENCES

- Abubakar M, Figueroa J, Ali HR, Blows F, Lissowska J, Caldas C, Easton DF, Sherman ME, Garcia-Closas M, Dowsett M, Pharoah PD. (2019). Combined quantitative measures of ER, PR, HER2, and Ki67 provide more prognostic information than categorical combinations in luminal breast cancer. *Mod Pathol*; 32,1244–1256.
- Anyanwu LJ, Atanda AT, Atanda JO (2015). Wilms' tumour in African children: can an institutional approach improve outcome? *Afr J Paediatr Surg.*; 12:7-11.
- Beckwith JB (1983). Wilms' tumor and other renal tumors of childhood: a selective review from the National Wilms' Tumor Study Pathology Center. *Hum Pathol*;14: 481–492.
- Beniers AJ, Efferth T, Füzesi L, Granzen B, Mertens R, Jakse G. (2001). p53 expression in Wilms' tumor: a possible role as prognostic factor. *Int J Oncol.*;18:133-139.
- Berrebi A (2008). From bench to bedside: the Vth Symposium on the Biology and Treatment of Chronic Lymphocytic Leukemia, January 2008, Tel Aviv. *Isr Med Assoc J*;10:906-908.
- Brok J, Treger TD, Gooskens SL, van den Heuvel-Eibrink MM, Pritchard-Jones K (2016). Biology and treatment of renal tumors in childhood. *Eur J Cancer*; 68:179–195.
- Chan CC, To KF, Yuen HL, Shing Chiang AK, Ling SC, Li CH, Cheuk DK, Li CK, Shing MM. (2014). A 20-year prospective study of Wilms tumor and other kidney tumors: a report from Hong Kong pediatric hematology and oncology study group. *J Pediatr Hematol Oncol.* 2014;36: 445-450.
- Cheah PL, Looi LM, Chan LL (1996). Immunohistochemical expression of p53 proteins in Wilms' tumour: a possible association with the histological prognostic parameter of anaplasia. *Histopathology.* 1996;28:49-54.
- Cunningham ME, Klug TD, Nuchtern JG, Chintagumpala MM, Venkatramani R, Lubega J, Naik-Mathuria BJ (2020). Global Disparities in Wilms Tumor. *J Surg Res.*;247:34-51.
- D'Angelo MF, Kausik SJ, Sebo TJ, Rathbun SR, Kramer SA and Husmann DA (2003). p53 immunopositivity in histologically favorable Wilms tumor is not related to stage at presentation or to biological aggression. *J Urol.*;169: 1815-1817.
- Das RN, Chatterjee U, Sinha SK, Ray AK, Saha K, Banerjee S (2012). Study of histopathological features and proliferation markers in cases of Wilms' tumor. *Indian J Med Paediatr Oncol.*;33:102-106.
- Davidoff AM (2009). "Wilms' tumor," *Current Opinion in Pediatrics,* 21(3): 357–364.
- Davidoff AM, Soutter A D, Shochat S J (1998). Wilms tumor presenting with abdominal pain: a special subgroup of patients. *Ann Surg Onco* ;5(3):213-215.
- Diniz G, Aktas S, Turedi A, Temir G, Ortac R & Vergin C (2011). Telomerase reverse transcriptase catalytic subunit expression and proliferation index in Wilms tumor. *Tumor Biology*; 32, 761–767.
- Franken J, Lerut E, Van Poppel H & Bogaert G (2013). p53 Immunohistochemistry expression in Wilms tumor: a prognostic tool in the detection of tumor aggressiveness. *J Urol*;189:664-670.
- Ghanem MA, van Steenbrugge GJ, Nijman RJM & van der Kwast TH (2005). Prognostic markers in nephroblastoma (Wilms' tumor). *Urology*;65(6):1047–1054.
- Goldhirsch A, Wood WC, Coates AS, Gelber RD, Thürlimann B, Senn HJ; Panel members. (2011). Strategies for subtypes-dealing with the diversity of breast cancer: highlights of the St Gallen International Expert Consensus on the Primary Therapy of Early Breast Cancer 2011. *Ann Oncol.*;23:2997–3006.
- Govender D, Harilal P, Hadley GP, Chetty R (1998). p53 protein expression in nephroblastomas: a predictor of poor prognosis. *Br J Cancer.*;77:314-318.
- Hsu SM, Raine L and Fanger H (1981). Use of avidin-biotin-peroxidase complex (ABC) in immunoperoxidase techniques: a comparison between ABC and unlabeled antibody (PAP) procedures. *J Histochem Cytochem.*;29:577-580.
- Illadea L, Hernandez-Marques C, Cormenzana M, Lassaletta Á, Andión Catalán M, Ruano D, Fioravanti V, Madero López L. (2018). Tumor de Wilms: revisión de nuestra experiencia en los últimos 15 años. *An Pediatr (Barc).*;88:140-149.
- Jadali F, Sayadpour D, Rakhshan M, Karimi A, Rouzrokh M, Shamsian BS, Shamshiri AR. (2011). Immunohistochemical detection of p53 protein expression as a prognostic factor in Wilms tumor. *Iran J Kidney Dis.* ;5:149-153.

- Jurić I, Pogorelić Z, Kuzmić-Prusac I, Biocić M, Jakovljević G, Stepan J, Zupancić B, Culić S, Kruslin B. (2010). Expression and prognostic value of the Ki-67 in Wilms' tumor: experience with 48 cases. *Pediatr Surg Int.*;26:487-493.
- Juzzkiewicz P (1997). Immunohistochemical evaluation of the percentage of proliferating neoplastic cells of Wilms' tumor in children by means of the MIB-1 monoclonal antibody]. *Ann Acad Med Stetin.*; 43():113-127.
- Krishna OH, Kayla G, Abdul Aleem M, Malleboyina R, Reddy Kota R (2016). Immunohistochemical Expression of Ki67 and p53 in Wilms Tumor and Its Relationship with Tumor Histology and Stage at Presentation. *Patholog Res Int.*;2016:6123951.
- Lahoti C, Thorner P, Malkin D, Yeger H. (1996). Immunohistochemical detection of p53 in Wilms' tumors correlates with unfavorable outcome. *Am J Pathol.*;148:1577-1589.
- Levitt G. (2012). Renal Tumours: Long-term outcome. *Pediatr Nephrol.*;27: 911-916.
- Malogolowkin M, Cotton CA, Green DM, Breslow NE, Perlman E, Miser J, Ritchey ML, Thomas PR, Grundy PE, D'Angio GJ, Beckwith JB, Shamberger RC, Haase GM, Donaldson M, Weetman R, Coppes MJ, Shearer P, Coccia P, Kletzel M, Macklis R, Tomlinson G, Huff V, Newbury R, Weeks D; National Wilms Tumor Study Group. (2008). Treatment of Wilms tumor relapsing after initial treatment with vincristine, actinomycin D, and doxorubicin. A report from the National Wilms Tumor Study Group. *Pediatr Blood Cancer*; 50:236-421.
- Menon SS, Guruvayoorappan C, Sakthivel KM and Rasmi RR (2019). Ki-67 protein as a tumour proliferation marker. *Clin Chim Acta.*;491:39-45.
- Mitchell C, Pritchard-Jones K, Shannon R, Hutton C, Stevens S, Machin D, Imeson J, Kelsey A, Vujanic GM, Gornall P, Walker J, Taylor R, Sartori P, Hale J, Levitt G, Messahel B, Middleton H, Grundy R, Pritchard J; United Kingdom Cancer Study Group. (2006). Immediate nephrectomy versus preoperative chemotherapy in the management of non-metastatic Wilms' tumour: results of a randomised trial (UKW3) by the UK Children's Cancer Study Group. *Eur J Cancer.* ;42(15):2554-2562.
- Mokhtar N, Salama A, Badawy O, Khorshed E, Mohamed G, Ibrahim M, Abdeazim H (2016). Cancer pathology registry: 2000-2011. Pathology department, National Cancer Institute, Cairo University. Chapter 4 (Ed.Khorshed E), 60-63.
- Ooms AH, Gadd S, Gerhard DS, Smith MA, Guidry Auvil JM, Meerzaman D, Chen QR, Hsu CH, Yan C, Nguyen C, Hu Y, Ma Y, Zong Z, Mungall AJ, Moore RA, Marra MA, Huff V, Dome JS, Chi YY, Tian J, Geller JI, Mullighan CG, Ma J, Wheeler DA, Hampton OA, Walz AL, van den Heuvel-Eibrink MM, de Krijger RR, Ross N, Gastier-Foster JM, Perlman EJ. (2016). Significance of TP53 Mutation in Wilms Tumors with Diffuse Anaplasia: A Report from the Children's Oncology Group. *Clin Cancer Res*;22:5582-5591.
- Oostveen RM and Pritchard-Jones K (2019). Pharmacotherapeutic Management of Wilms Tumor: An Update. *Paediatr Drugs.*;21:1-13.
- Pribnow AK, Ortiz R, Baez LF, Mendieta L, Luna-Fineman S. (2017). Effects of malnutrition on treatment-related morbidity and survival of children with cancer in Nicaragua. *Pediatr Blood Cancer.*;64 (11).
- Pritchard-Jones K, Bergeron C, de Camargo B, van den Heuvel-Eibrink MM, Acha T, Godzinski J, Oldenburger F, Boccon-Gibod L, Leuschner I, Vujanic G, Sandstedt B, de Kraker J, van Tinteren H, Graf N, SIOP Renal Tumours Study Group (2015). Omission of doxorubicin from the treatment of stage II/III, intermediate-risk Wilms' tumour (SIOP WT 2001): an open-label, non-inferiority, randomised controlled trial. *Lancet*; 386:1156-1164.
- Rivlin N, Brosh, Moshe Oren, and Varda Rotter (2011). Mutations in the p53 Tumor Suppressor Gene Important Milestones at the Various Steps of Tumorigenesis. *Genes Cancer*; 2(4): 466-474.
- Salama A & Kamel A (2011). Evaluation of nuclear unrest and p53 immunostaining in Wilms' tumor. *J Egypt Natl Canc Inst.* ;23:31-39.
- Sangkhatat S, Chotsampancharoen T, Kayasut K, Patrapinyokul S, Chiengkriwate P, Kitichet R, Maipang M. (2018). Outcomes of pediatric nephroblastoma in southern Thailand. *Asian Pac J Cancer Prev.* 2008;9: 643-647.
- Seminara C, Planells MC, Pogonza RE, Miriam Morales, Colaboradores (2019). Wilms tumor: 15 years of experience at a children's hospital in Córdoba, Argentina. *Arch Argent Pediatr.* ;117:263-270.
- Skotnicka-Klonowicz G, Kobos J, Łoś E, Trejster E, Szymik-Kantorowicz S, Daszkiewicz P (2002). Prognostic value of proliferating cell nuclear antigen in Wilms' tumour in children. *Eur J Surg Oncol.*;28:67-71.
- Sonn G and L. M. Shortliffe (2008). "Management of Wilms tumor: current standard of care," *Nature Clinical Practice. Urology*, 5(10): 551-560.

- Sredni ST, de Camargo B, Lopes LF, Teixeira R, Simpson A (2001). Immunohistochemical detection of p53 protein expression as a prognostic indicator in Wilms tumor. *Med Pediatr Oncol*;37:455-458.
- Steliarova-Foucher E, Colombet M, Moreno F, Dolya A, Bray F, Hesselting P, Young Shin P, Stiller CA (2017). International incidence of childhood cancer, 2001–10: a population-based registry study. *Lancet Oncol*; 18:719–731.
- Tang F, Zhang H, Lu Z, Wang J, He C and He Z (2019). Prognostic Factors and Nomograms to Predict Overall and Cancer-Specific Survival for Children with Wilms' Tumor. *Disease Markers*. Volume 2019, Article ID 1092769, 11 pages
- Termuhlen AM, Tersak JM, Liu Q, Yasui Y, Stovall M, Weathers R, Deutsch M, Sklar CA, Oeffinger KC, Armstrong G, Robison LL, Green DM. (2011). Twenty-five-year follow-up of childhood Wilms tumor: a report from the Childhood Cancer Survivor Study. *Pediatr Blood Cancer*; 57:1210-1216.
- Trehan A, Chowdhary SK, Marwaha RK (2012). Wilms tumor: five-year tumor-free survival on a modified SIOP protocol from an Indian university hospital. *J Pediatr Hematol Oncol*;34(1):57-62.
- Weeks D; National Wilms Tumor Study Group. (2008). Treatment of Wilms tumor relapsing after initial treatment with vincristine, actinomycin D, and doxorubicin. A report from the National Wilms Tumor Study Group. *Pediatr Blood Cancer*; 50:236-421.
- Wei CL, Wu Q, Vega VB, Chiu KP, Ng P, Zhang T, Shahab A, Yong HC, Fu Y, Weng Z, Liu J, Zhao XD, Chew JL, Lee YL, Kuznetsov VA, Sung WK, Miller LD, Lim B, Liu ET, Yu Q, Ng HH, Ruan Y. (2006). A global map of p53 transcription-factor binding sites in the human genome. *Cell*, 124: 207-219.

**Egyptian Association for Cancer Research (EACR)**

<http://eacr.tanta.edu.eg/>

EACR is an NGO society that was declared by the Ministry of Social Solidarity (Egypt) No. 1938 in 19/11/2014 based on the initiative of Prof. Mohamed Labib Salem, the current Chairman of EACR. EACR aims primarily to assist researchers, in particular young researchers in the field of cancer research through workshops, seminars and conferences. Its first international annual conference entitled "Anti-Cancer Drug Discovery" was successfully organized in April 2019 (<http://acdd.tanta.edu.eg>). Additionally, EACR aims to raise the awareness of the society about the importance of scientific research in the field of cancer research in prediction, early diagnosis and treatment of cancer. EACR is also keen to outreach the scientific community with periodicals and news on cancer research including peer-reviewed scientific journals for the publication of cutting-edge research. The official scientific journal of EACR is "International Journal of Cancer and biomedical Research (IJCBR: <https://jcbjournals.ekb.eg>) was successfully issued in 2017 and has been sponsored by the Egyptian Knowledge Bank (EKB: [www.ekb.eg](http://www.ekb.eg)).

**EACR Chairman,****Prof. Mohamed Labib Salem, PhD**

Professor of Immunology

Faculty of Science, Tanta University, Egypt

## GUIDE FOR AUTHORS

**Publisher** :The International Journal of Cancer and Biomedical Research (IJCBR) is an International and interdisciplinary journal of preclinical and clinical studies in the area of cancer and biomedical research. It is a peer-reviewed journal in English, published quarterly (in March, June, September, and December) by the Egyptian Association for Cancer Research (EACR) in both print and online formats (4 issues making a volume). Special issues or supplements may also be produced from time to time upon agreement with the Editorial Board.

**Scope** :The main aim of IJCBR is to attract the best research in animal and human biology in health and diseases from across the spectrum of the biomedical sciences at the molecular, cellular, organ, and whole animal levels especially those that are related to cancer research, including causes, prediction, diagnosis, prognosis, and therapy.

**Publication Fees** :The journal does charge for submission, processing, or publication of manuscripts (2000 LE for Egyptians or 250\$ for non-Egyptians; EACR members receive 15% discount on publication). Of them Peer-review fees (300 LE) should be paid on submission (non-refundable). For the fast-track production of the accepted manuscript, another 500 LE is paid.

General specifications for different types of article

- Submitted manuscripts should not have been published previously, except in a limited form (e.g. short communication to a symposium or as part of MSc or PhD theses) and should not be under consideration for publication by other journals.
- All co-authors should agree with the content of the manuscript. Authors must have obtained permission to use any copyrighted material in the manuscript before submission.

**IJCBR publishes different types of articles**

- **Original Article (6000 words with 4 tables and 4 figures, maximum 8 display items)**: Articles with novel findings are the target of IJCBR. Articles presenting a detailed description of a new technique, comparison of existing methods, meta-analyses with comprehensive and in-depth discussion are considered. Papers in a numbered series are not accepted unless all are submitted at the same time.
- **Short communications or case study (3000 words with 4 display items)**: Short communications present exceptionally exciting, novel or timely contents are considered. They will be peer-reviewed in the same way as research papers. The references are restricted to 15.
- **Reviews or systematic review (9000 words with 10 display items)**: They are invited by the Editorial Board or unsolicited. Review articles have to be contemporary and comprehensive and add information to the knowledge. Sharp critical analyses of novel data or concepts are encouraged. When relevant, a statistical analysis of data and a meta-analysis approach are recommended.
- **Opinion papers, letter to the editor or comment to the editor (1500 words with 2 display items)**: They are submitted by invitation of the Editorial Board. They are short papers, which aim to inform scientists, industry, and the public and policymakers about cutting-edge issues in research or the impact of research. They reflect the opinion of their authors who bear full responsibility of the published paper. The references are restricted to 10.
- **Conference/Symposium papers**: The journal will consider for publication the results of original work and critical reviews that are presented at conferences/symposia. Symposium organizers who wish to publish bundles of papers from a symposium/conference in IJCBR should first contact the Editor-in-Chief of the IJCBR (EACR@unv.tanta.edu.eg) for agreement. Supplementary material can be proposed and will be made available online. The responsibility for the preparation of a paper in a form suitable for publication lies with the author.
- **Thesis**: IJCBR can publish the summary and abstract of Master and PhD theses in a special issue.

**English**: Good quality of written English is required. Spelling may be in British or American English but must be consistent throughout the paper. Care should be exercised in the use of biological terminology that is ill-defined or of local familiarity only. We recommend that authors have their manuscripts checked by an English language native speaker before submission.

**Manuscript layout**: Manuscripts should be prepared using a standard word processing program and presented in a clear readable format with easily identified sections and headings. The manuscript layout is based on the following directions.

- The main text contains Title, Abstract, Keywords, Introduction, Material and Methods, Results, Discussion, References, Tables, figures.
- The title needs to be concise and informative. Use bold, with an initial capital for the first word only and for words that ordinarily take capitals.
- Short (running) title (max 80 characters including spacing).
- The article text should be typed with double line spacing with wide margins (2.5 cm).
- The lines must be continuously numbered; the pages must also be numbered.
- Font Calibri 12 should be used for the text, and 12 for the tables, figure legends and references.
- The sections should typically be assembled in the following order:
- Title page contains title, authors' names, full affiliations, acknowledgements and the corresponding author's contacts and Short title.

**Abstract (max 250 words, single paragraph)**: The abstract should be complete and understandable without citation, references, table, or figure. Use structured abstract: Background, Aim, Materials & Methods, Results and Conclusion. The context and the rationale of the study are presented succinctly to support the objectives. The experimental methods and main results are summarized but should not be overburdened by numerical values or probability values. The abstract ends with a short and clear conclusion.



**Keywords:** Up to five short and specific keywords should complement the title with respect to indicating the subject of the paper in alphabetic order.

**Introduction:** The introduction briefly outlines the context of the work, presents the current issues that the authors are addressing and the rationale to support the objectives, and clearly defines the objectives.

**Material and methods:** Material and methods should be described in sufficient details so that others can repeat the experiment. Reference to previously published work may be used to give methodological details, provided that said publications are readily accessible and in English. The code of ethics should be followed for all experiments use animals or human samples.

**Statistical analysis of results:** The statistical design and the models of statistical analysis must be described, as well as each of the statistical methods used. Sufficient statistical details must be given to allow replication of the statistical analysis. The experimental unit should be defined (e.g., individual or group of animals).

**Results:** Data are presented as tables and figures. Brief description of the results for each table and figure should be presented. Unpublished data can be mentioned when necessary.

**Discussion:** Should be separate from the Results section and should focus only on intra- and inter-data discussion (the data in the results section) as well as with the relative data in the literature. Don't repeat information already presented in the Introduction section. Start the first paragraph in the Discussion with a paragraph stating the rationale behind the study, the objectives, and the main findings. End Discussion with a short conclusion.

**Acknowledgements:** In this section, the authors may acknowledge (briefly) their support staff.

**Conflict of interest:** All papers with a potential conflict of interest must include a description/explanation in a separate heading.

**Funding details:** The authors should state the source of findings of the study (with research funder and/or grant number). If no fund, the authors should state that the study is self-funded.

## References

*Citation of references:* In the text, references should be cited by the author(s) surname(s) and the year of publication (e.g. Salem, 2020). References with two authors should be cited with both surnames (e.g. Salem and Meshrif, 2021). References with three or more authors should be cited with the first author followed by et al. (in italics; e.g. Salem et al., 2021). Names of organizations used as authors (e.g. Food and Drug Administration) should be written out in full in the list of references and on the first mention in the text. Subsequent mentions may be abbreviated (e.g. FDA).

- List of references. Literature cited should be listed in alphabetical order by authors' names. It is the author's responsibility to ensure that all references are correct. All authors should be written and so the full journal name.
- References from journal articles are formatted in APA as this example: Al-Amoudi WM (2018). Toxic effects of Lambda-cyhalothrin on the rat thyroid. Involvement of oxidative stress and ameliorative effect of ginger extract. *Toxicology Reports*, 5: 728-736.
- References from books or official reports are formatted as this example. Kebreab E, Dijkstra ANM, Bannink A, Gerrits WJJ, & France J (2006). Nutrient digestion and utilization in farm animals. CABI Publishing. Wallingford, UK.
- References from chapters or parts of books are formatted as this example. Nozière P, & Hoch T (2006). Modelling fluxes of volatile fatty acids from rumen to portal blood. In: Nutrient digestion and utilization in farm animals (Kebreab E, Dijkstra ANM, Bannink A, Gerrits WJJ & France J, eds.), pp. 40–47. CABI Publishing. Wallingford, UK.

**Tables:** The data should be presented in tables or in graphs, not both.

- Each table should be placed on a separate page at the end of the main text.
- Tables are numbered consecutively using Arabic numbering. They are referred to as Table 1, Table 2, etc., with capital 'T', no italics
- Each table has its explanatory caption. The caption is sufficient to permit the table to be understood without reference to the text.
- Abbreviations used in tables/figures have to be defined either as footnotes or in the caption.

## Figures

- Package the figures in a single PowerPoint file. Each figure in a separate slide.
- Figure size should be readable in a width of approximately 8-175 mm (i.e. the maximum size of printing over two columns).
- Ensure that the font size is large enough to be readable at the final print size, use Calibri font to ensure that they are consistent throughout the figures.
- The figures should preferably be provided as TIFF or EPS files.
- The resolutions of figures must be at least 300 dpi.
- Preparation of images for a manuscript: For guidance, we refer to the Journal of Cell Biology's instructions to authors ([http://jcb.rupress.org/site/misc/ifora.xhtml#image\\_aquisition](http://jcb.rupress.org/site/misc/ifora.xhtml#image_aquisition)).
- If a cropped image is included in the main text of a paper (e.g. a few lanes of a gel), display the full original image, including the appropriate controls, the molecular size ladder and/or the scale as relevant, as a single figure in a Supplementary Material file to facilitate peer-review and for subsequent online publication.
- Supplementary material is submitted along with the main manuscript in a separate file and identified at uploading as "Supplementary File – for Online Publication Only" The title of the article is included at the top of the supplementary material.

**Corresponding author's guidelines:** Upon acceptance the corresponding author is required to send his/her recent formal photo to be attached to the front page of the article.

**International Journal of Cancer & Biomedical Research**  
**(IJCBR) Online ISSN 2682-2628**

**Editor-in-Chief**

---

**Mohamed Labib Salem, PhD**  
Tanta University, Egypt

**EACR Board**

---

**Nehal Elmashad, MD**  
Tanta University, Egypt  
**Nabil Mohy Eldin, PhD**  
Kafrelsheikh University, Egypt  
**Doaa Al-Ghareeb, PhD**  
Alexandria University, Egypt  
**Abdel-Aziz Zidan, PhD**  
Damanhour University, Egypt

**Managing Editor**

---

**Wesam Meshrif, PhD**  
Tanta University, Egypt  
**Sohaila Galal, PhD**  
Tanta University, Egypt

**Production and Contact**

---

**Hamdi Kandil**  
Tanta University, Egypt  
Email: ijcb100@gmail.com

**Advisory Board**

---

**Alberto Montero, MD**  
Taussig Cancer Center, Cleveland,  
USA  
**Yi Zhang, MD**  
Zhengzhou University, China  
**Mark Robunstein, Ph D**  
Medical University of South  
Carolina, USA  
**Mohsen Farid, Ph D**  
Derby University, USA  
**Natarajan Muthusamy, Ph D**  
Ohio State University, USA  
**Hideki Kasuya, MD**  
Nagoya University, Japan  
**Sherif El-Khamisy, Ph D**  
Sheffield University, UK  
**Mohamed Ghanem, Ph D**  
Kafr Elshikh University, Egypt  
**Sayed Bakry, Ph D**  
Alazhar University, Egypt  
**Sameh Ali, Ph D**  
Nationa Liver Institute, Egypt  
**Gamal Badr, Ph D**  
Assuit University, Egypt  
**Nadia Hamdy, Pharm D**  
Ain Shams University, Egypt

**Alaa Eldin Almostafa, MD**  
McGill University, Canada  
**Olfat Gadallah, MD**  
Tanta University, Egypt  
**Nagla Sarhan, MD**  
Tanta University, Egypt  
**Naglaa Fathy, Pharm D**  
Zagazik University, Egypt  
**Mohamed Salama, MD**  
Mansoura University, Egypt  
**Mona Marie, MD**  
Alexandria University, Egypt

**Preclinical studies**

**Mostafa El-Sheekh**  
Tanta University, Egypt  
**El-Refai Kenawy, Ph D**  
Tanta University, Egypt  
**Mohamed Nouredin, Ph D**  
Banaha University, Egypt  
**Yousry Albolchini, Ph D**  
Tanta University, Egypt  
**Elsayed Salim, Ph D**  
Tanta University, Egypt  
**Shengdian Wang, Ph D**  
Chinese Academy of Sciences,  
China

**Sabry El Naggar, Ph D**  
Tnata Univesity, Egypr

**Faris Alenzi, Ph D**  
Prince Sattam bin Abdulaziz  
University, KSA

**Ibrahim El-Sayed, Ph D**  
Menoufia University, Egypt

**Tarek Aboul-Fadi, Ph D**  
Assiut University, Egypt

**Rabab Khairat, Ph D**  
National Research Center,  
Giza, Egypt

**Wael Lotfy, Ph D**  
Alexandria University, Egypt

**Ashraf Tabll, Ph D**  
National Research Center, Egypt

**Nahla Shoukry, Ph D**  
Suez University, Egypt

**Medhat Eldenary, Ph D**  
Tanta University, Egypt

**Azza Hasan, Ph D**  
Menoufia University, Egypt

**Nanees Gamal Eldin, Ph D**  
Tanta University, Egypt

**Mohamed Mansour, UK**  
Sabbah Hammoury, Ph D  
Alexandria Ayadi Almostaqbal  
Oncology Hospital, Egypt

**Nehal Aboufotouh, Ph D**  
Zewail City for Science and  
Technology, Cairo, Egypt

**Amir Elkhami, Ph D**  
Galaxo, San Francisco, USA

**Ahmed Alzohairy, Ph D**  
Zagazi University, Egypt

**Wgady Khalil, Ph D**  
National Research Center, Egypt

**Amr Amin, Ph D**  
United Arab Emirates  
University, UAE

**AbdelRahman Zekri, Ph D**  
National Cancer Institute, Egypt

**Hussein Khamis, Ph D**  
Alexandria University, Egypt

**Magdy Mahfouz, Ph D**  
Kafr Elsheikh University, Egypt

**Ehab Elbedewey, Ph D**  
Tanta University, Egypt

**Abeer Badr, Ph D**  
Cairo University, Egypt

**Mamdooh Ghoneum, Ph D**  
Charles Drew University of  
Medicine & Science, USA

**Haïam Abou Elela, Ph D**  
National Institute of Oceanography  
and Fisheries, Egypt

**Maha EL-Demellawi, Ph D**  
City for Scientific Research &  
Technology Applications, Egypt

**Desouky Abd-El-Haleem, Ph D**  
City for Scientific Research &  
Technology Applications, Egypt

**Editorial Board**

---

**Clinical studies**

**Hesham Tawfik, MD**  
Tanta University, Egypt  
**Mohamed Attia, MD**  
Tanta University, Egypt  
**Mohamed Elshanshory, MD**  
Tanta University, Egypt  
**Essam Elshiekh, MD**  
Tanta Cancer Center, Egypt  
**Rasha Eraky, MD**  
Tanta University, Egypt  
**Shaima Abou-Kjatwa, MD**  
Tanta University, Egypt  
**Marcela Diaz, MD**  
Cleveland Clinic Foundation, USA  
**Mohamed Abou-El-Enein, MD**  
Charité Universitätsmedizin Berlin,  
Germany