

Online ISSN: 2682-2628
Print ISSN: 2682-261X

IJC CBR

INTERNATIONAL JOURNAL OF CANCER AND BIOMEDICAL RESEARCH

<https://jcbr.journals.ekb.eg>

Editor-in-chief

Prof. Mohamed Labib Salem, PhD

NRF-2 and KEAP-1 Expression in Pancreatic Cancer
Patients: A Clinicopathological Study

Maha M. Fawzy, Hend M. Elkalla, Heba Sheta and Walaa Ahmed M.
Yusuf



PUBLISHED BY

EACR EGYPTIAN ASSOCIATION
FOR CANCER RESEARCH

Since 2014

Twenty-eight cases (62.6%) were seen in stage IB\IIB or III. Lympho-vascular invasion was seen in 33 cases (73.3%), 27 cases (60.0%) were seen with distant metastasis, 25 cases (55.6%) with peri-neural invasion and 39 cases (86.7%) with free pancreatic safety margins. Out of 45 cases, 29 died (64.4%) and 16 survived (35.6%).

NRF2 expression and clinicopathological features

Among the 45 cases, NRF2 expression in tumour cells was high 25 cases (55.6%) and 20 cases (44.4%) showed low expression (Figure 1). The relationship between NRF2 expression and the clinicopathological parameters is summarized in Table 1. Significant statistical associations were found between NRF2 expression and duodenal infiltration ($P=0.005$), as (82.4%) of high expression was seen in tumors with no pancreatic infiltration whereas (60.7%) of low expression cases were seen in tumors with pancreatic infiltration.

Keap1 expression and clinic-pathological features

Out of 45 cases, twenty-six cases (57.8%) showed high Keap1 expression in tumor cells while 19 (42.2%) showed low expression. The relationship between Keap1 expression and the clinicopathological parameters is summarized in Table 2. A significant relation was seen between Keap1 expression and duodenal infiltration ($P=0.009$), as (82.4%) of high expression was seen in tumors with no duodenal infiltration where (57.1%) of low expression cases was seen in duodenal infiltration. A significant correlation between NRF2 expression and Keap1 expression in tumor cells (≤ 0.001) was seen in Table 3.

Overall survival and disease-free survival

As shown in Table 4, there was a significant association between overall survival and peri-neural invasion. Negative peri-neural invasion showed better overall survival than cases with positive invasion ($P=0.039$) (Figure 2). No significant associations were found between overall survival and NRF2 and Keap1 expressions in tumor cells ($p=0.356$, $P=0.434$, respectively). Table 5 showed significant association between free survival, perineural invasion and pancreatic safety margin.

Figure 1. (A) Photomicrograph showing high and cytoplasmic Expression (>25%) of NRF2 in well-differentiated tumor (100 \times). (B) Previous case that shows High cytoplasmic keap1 expression(>25%).C) Photomicrograph showing low expression (<25%) of NRF2 in poorly differentiated tumor D) Previous case that shows low expression (<25%) of keap1.

Cases with perineural invasion showed shorter disease-free survival ($P=0.003$) (Figure 2). Cases with infiltrated pancreatic safety margin showed shorter disease-free survival ($P=0.003$). Also, there was no significant association between NRF2 and Keap1 expression and disease-free survival ($P=0.301$, $P=0.393$, respectively).

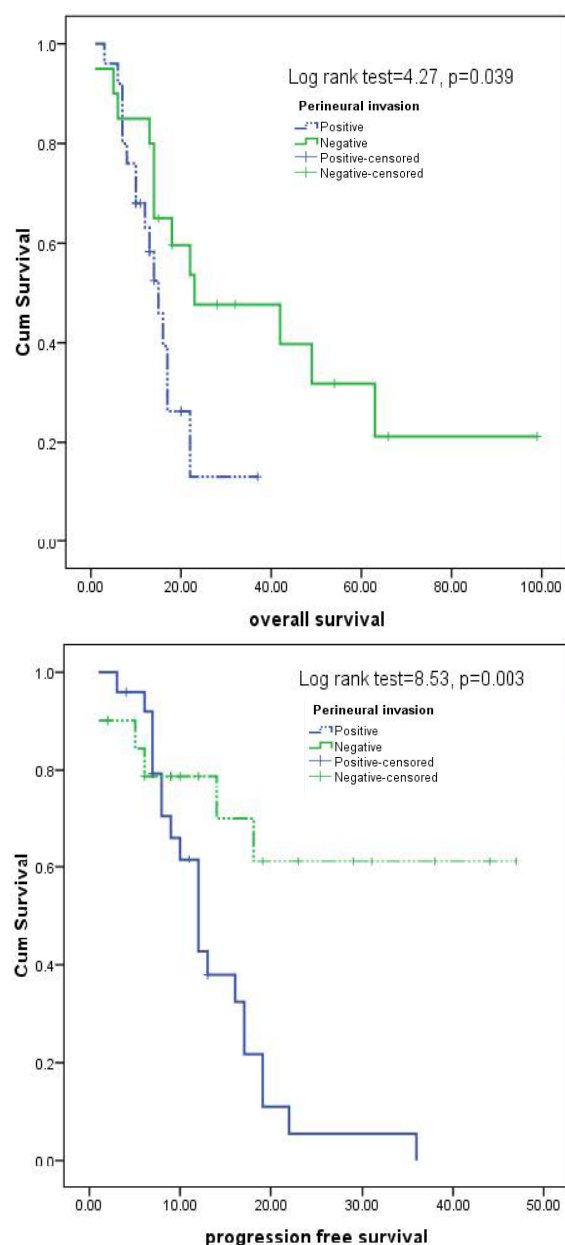


Figure 2. (A) Kaplan-Meier survival curve for overall survival among patients with and without perineural invasion (B) Kaplan-Meier survival curve for progression-free survival among patients with and without perineural invasion.

DISCUSSION

Pancreatic cancer is one of the leading causes of death in many countries. It has a poor prognosis, which is related to poor specific symptoms and signs and delayed diagnosis (Lister et al., 2011; Capasso et al., 2018). Pancreatic cancer has a multistep carcinogenesis process like colorectal cancer, in which oxidative stress plays an important role (Capasso et al., 2018). The transcription factor nuclear factor E2-related factor 2 (NRF2) controls the oxidative stress response. It contributes significantly to homeostasis maintenance by promoting the expression of several genes that regulate antioxidant defense (Purohit et al., 2020). The E3 ubiquitin ligase Keap1 (Kelch ECH-associating protein 1) normally keeps NRF2 low. The transcription factor Nrf2 interacts with Keap1, causing it to be targeted for ubiquitylation and proteasomal destruction (Jung et al., 2018).

However, excessive stress causes the dissociation of Nrf2 from Keap1, causing constitutive activation of Nrf2 and increasing the expression of genes necessary for cancer cell proliferation, ferroptosis, autophagy, angiogenesis, drug resistance, and metastasis. So, in cancer biology, Nrf2 has a double-edged sword depending on the stage of carcinogenesis. In the early stages, Nrf2 activation prevents carcinogenesis at late stages, it causes cancer cell progression (Cykowiak and Krajka-Kuźniak, 2022).

Numerous cancerous cells, including ductal adenocarcinomas and pancreatic cancer cell lines, express Nrf2 at an increased level. This explains why these cells can react to stress signals, resist chemotherapy treatments, and have low patient survival rates (Lister et al., 2011).

In this work, 45 cases of pancreatic cancer were stained by NRF2 and Keap1 antibodies to assess their expression in pancreatic cancer cells and correlate these results with clinicopathological parameters and patient survival. There was a high nuclear expression of NRF2 staining in 55.6%, and 44.4% showed low expression. This expression was reported in different studies on different organs (Ondodera et al., 2014).

Table 3. Correlation between NRF2 and Keap1

	NRF2	
	r	P value
Keap1	0.956	≤0.001

Table 4. Kaplan-Meier overall survival

	Overall Survival				
	Median Survival Time	Std. Error	95% CI	Log Rank test	P - value
Age/ years					
• <60 y	46.527	12.912	21.22-71.83		
• ≥60 y	22.099	4.113	14.03-30.16	3.76	0.052
Gender					
• Male	34.409	8.420	17.90-50.91		
• Female	26.832	5.438	16.17-37.49	0.012	0.912
Tumor site					
• Head	33.743	6.152	21.68-45.8		
• Body\uncinate process	16.667	6.158	4.59-28.73	0.339	0.560
Tumor size					
• ≤2.5	38.672	7.439	24.09-53.25		
• >2.5	16.800	4.326	8.32-25.27	2.96	0.085
Grade					
• Mild\mod differentiated	33.780	6.110	21.8-45.7		
• Poorly differentiated	9.500	4.500	0.68-18.3	3.61	0.057
Duodenal infiltration					
• No	19.376	4.267	11.01-27.73		
• Yes	38.266	7.807	22.96-53.56	2.53	0.112
LN					
• Positive	30.331	5.181	20.17-40.48		
• Negative	28.186	7.879	12.74-43.62	0.973	0.324
5TNM.GP					
• IIA\IA	27.441	7.727	12.29-42.58		
• IB\IIB\III	30.637	5.188	20.46-40.80	1.29	0.255
Lymph vascular emboli					
• Positive	32.312	6.321	19.92-44.7		
• Negative	22.117	4.092	14.09-30.13	0.009	0.925
Metastasis					
• Positive	17.822	2.739	12.45-23.19		
• Negative	40.149	8.210	24.05-56.24	2.62	0.105
Perineural invasion					
• Positive	16.350	2.383	11.67-21.02		
• Negative	41.882	8.540	25.14-58.62	4.27	0.039*
Pancreatic safety margin					
• Free	32.310	6.869	18.84-45.8		
• Infiltrated	32.667	8.569	15.87-49.5	0.118	0.73
NRF2					
• Low expression	31.281	6.303	18.92-43.63		
• High expression	31.313	7.659	16.30-46.32	0.852	0.356
Keap1					
• Low expression	30.820	6.286	18.50-43.14		
• High expression	31.837	7.744	16.65-47.01	0.613	0.434
Overall OS	32.582	5.869	21.07-44.08		

Log Rank (Mantel-Cox) was used, CI: confidence interval

Table 5. Kaplan-Meier disease free survival

	Disease free Survival				
	Median Survival Time	Std. Error	95% CI	Log Rank test	P - value
Age/ years					
• <60 y	26.200	4.690	17.00-35.39		
• ≥60 y	16.394	2.837	10.83-21.95	3.03	0.082
Gender					
• Male	17.813	2.496	12.92-22.70		
• Female	22.765	4.768	13.42-32.11	0.1	0.752
Tumor site					
• Head	21.014	2.864	15.39-26.6		
• Body\ uncinat process	12.333	4.910	2.70-21.95	1.03	0.311
Tumor size					
• ≤2.5	20.457	3.067	14.44-26.5		
• >2.5	16.857	3.201	10.58-23.13	0.011	0.917
Grade					
• Mild\mod differentiated	20.447	2.704	15.14-25.7		
• Poorly differentiated	7.000	1.414	4.22-9.77	0.823	0.364
Duodenal infiltration					
• No	16.918	3.318	10.41-23.4		
• Yes	22.010	3.559	15.03-28.9	0.657	0.418
LN					
• Positive	22.456	3.558	15.48-29.4		
• Negative	15.303	2.936	9.54-21.1	1.22	0.269
TNM.GP					
• IIA\IA	15.607	3.139	9.45-21.7		
• IB\IIB\III	21.888	3.432	15.16-28.6	0.86	0.354
Lymph vascular emboli					
• Positive	23.181	3.640	16.04-30.3		
• Negative	16.037	2.616	10.91-21.16	0.813	0.367
Perineural invasion					
• Positive	13.600	1.615	10.43-16.7		
• Negative	32.306	4.857	22.78-41.8	8.53	0.003*
Pancreatic safety margin					
• Infiltrated	16.430	2.047	12.41-20.4		
• Free	39.250	6.712	26.09-52.4	4.54	0.033*
NRF2					
• Low expression	16.749	3.069	10.73-22.76		
• High expression	23.527	4.094	15.50-31.55	1.06	0.301
Keap1					
• Low expression	17.062	3.237	10.71-23.4		
• High expression	22.740	3.933	15.03-30.4	0.73	0.393
DFS	20.212	2.667	14.98-25.44		

In tumors without pancreatic infiltration, NRF2 expression was substantially connected with the presence of pancreatic infiltration ($P = 0.005$), whereas in tumors with pancreatic infiltration, NRF2 expression was significantly correlated with low expression (60.7%). This

may contradict research (Shen et al., 2013) that shows NRF2 is involved in invasion and metastasis. They reported that Nrf2 inhibition suppressed the migration and invasion of ESCC cells under hypoxic conditions by promoting the expression of E-cadherin and suppressing the

expression of MMP-2. This study depends on detecting the relationship between the Nrf2 level and other genes that promote and induce invasion using different *in vitro* studies. However, depending on the stage of carcinogenesis reported by different studies, the dual sword theory can explain our results (Cykowiak and Krajka-Kuźniak, 2022). In our work, there was no other significant correlation between Nrf2 expression and other clinicopathological parameters. These findings agree with those of Lister et al., who found no evidence of a significant relationship between the expression of Nrf2 in tumor cells and other clinicopathological variables. Also, Huang et al. found no significant correlation between Nrf2 expression in oral squamous cell carcinoma and tumor stage, lymph node status, or pathological grade. However, other studies showed significant correlations with some clinicopathological parameters, like Onodera et al. who found a significant association between Nrf2 expression in breast cancer cells and histological grade, p62 status, pathological tumor factor (pt.), lymph node metastasis, HER2 status, and Ki-67 status. This discrepancy can be explained by their larger sample size and their use of different *in vitro* studies to detect Nrf2 expression in cancer cells.

Keap1 has an important role in cancer prevention and progression. It is an adaptor for the ubiquitin ligase complex that regulates Nrf2 activity (Huang et al., 2013). Under physiological conditions, Keap1 binds to Nrf2, and through the ubiquitin-proteasome, it directs it to degradation and represses it (Ahtikoski et al., 2019). In oxidative stress, Nrf2 degradation ceases; it accumulates in nuclei and activates target genes for cytoprotecting (Taguchi et al., 2011). This may help cancer cells escape from oxidative stress induced by chemotherapeutic agents (Ahtikoski et al., 2019). In the present study, out of 45 cases, 57.8% showed high Keap1 expression in tumor cells, while 42.2% showed low expression. A significant relationship was seen between Keap1 expression and duodenal infiltration ($P = 0.009$), as 82.4% of cases of high expression were seen in tumors with no duodenal infiltration and 57.1% of low expression cases were seen in tumors with duodenal infiltration. These results

may be explained by the study of Ohta et al., who concluded that weakened Keap1 function in lung cancer cells acquired multiple advantages for cancer cells to proliferate. Other clinicopathological characteristics have no meaningful correlation. Furthermore, Huang et al. discovered no link between Keap1 expression and tumor stage, grade, or lymph node status.

In the present study, there was a significant correlation between NRF2 expression and Keap1 expression in tumor cells ($p=0.001$). These results agree with Huang et al.'s results, which reported that Keap1 was statistically associated with nuclear Nrf2 ($P = 0.000$).

The Kaplan-Meier test was employed for survival analysis, and the log-rank test was performed to establish the statistical significance of differences between curves. The present study had a significant association between overall survival, disease-free survival, and perineural invasion. Negative peri-neural invasion showed better overall survival and disease-free survival than cases with positive invasion ($P = 0.039$, $P = 0.003$, respectively). This agrees with many studies that proved the importance of per-neural invasion as a prognostic factor in pancreatic cancer (Zhang et al., 2013).

Also, there was a significant association between disease-free survival and the pancreatic safety margin. Cases with an infiltrated pancreatic safety margin showed longer disease-free survival ($P = 0.003$). These results were opposite those of Chen et al., who posted that there was a significant difference in long-term survival with margins clear by 2mm and no significant difference if margins were less than 1mm. This discrepancy may be due to methods of margin assessment, as we didn't estimate the distance statically (Chen et al., 2010).

No significant associations were found between overall survival and NRF2 and Keap1 expressions in tumor cells ($p = 0.356$ and 0.434 , respectively). Also, there was no significant association between NRF2 and Keap1 expression and disease-free survival ($P = 0.301$ and $P = 0.393$, respectively). Huang et al. reported no significant association between

Nrf2 expression and Keap1 expression in oral squamous cell carcinoma and overall survival or patient outcome. This may be different from other studies that reported an association between Keap1 or Nrf2 expression and patient survival in different types of cancer cells (Ondodera et al., 2014, Isohookana et al., 2015, Ahtikoski et al., 2019). This may be explained by different sample sizes, the scoring system used in immune stain interpretation, and finally, other in vitro methods used for the detection of both Nrf2 and Keap1.

CONFLICT OF INTEREST

No conflict of interest.

FUNDING DETAILS

The study is self-funded.

REFERENCE

- Ahtikoski A., Kangas J., Salonen R., Puistola U., and Karihtala P. (2019). Cytoplasmic Keap1 Expression Is Associated with Poor Prognosis in Endometrial Cancer. *Anticancer Research* 39: 585-590.
- Canning P., sorrel F., Bullock A. (2015). Structural basis of Keap1 interaction with Nrf2. *Free Radic Biol Med*, 88:101-107.
- Capasso M., Franceschi M., Rodriguez-Castro K., Crafa P., Cambiè G., Miraglia C., Alberto Barchi, Antonio Nouvenne, Gioacchino Leandro, Tiziana Meschi, Gian Luigi De' Angelis, Francesco Di Mario (2018). Epidemiology and risk factors of pancreatic cancer. *Acta Biomed*, 89: 141-146.
- Chen J., Bhandari M., Astill D., Wilson T., Kow L., Brooke-Smith M., Toouli J., and Padbury R. (2010). Predicting patient survival after pancreaticoduodenectomy for malignancy: histopathological criteria based on perineural infiltration and lymphovascular invasion. *HPB*, 12(2): 101-108.
- Cykowiak M. and Krajka-Kuźniak V. (2022). Role of Nrf2 in Pancreatic Cancer. *Antioxidants*, 11, 98.
- Hartikainen J., Tengstrom M., Kosma V., Kinnula V., Mannerna A. and Soini Y. (2012). Genetic Polymorphisms and Protein Expression of NRF2 and Sulfiredoxin Predict Survival Outcomes in Breast Cancer. *Cancer Res*, 72(21); 5537-5546.
- Huang C., Zhang L., Si-Rui M., Zhao Z., Wang W., He K/, Zhao Y., Zhang W., Liu B., and Sun Z.(2013). Clinical significance of Keap1 and Nrf2 in oral Squamous Cell Carcinoma. *PLOS ONE*, 8: 12.
- Isohookana J., Haapasaari K., Soini Y., and Karihtala P. (2015). Keap1 expression has independent prognostic value in pancreatic adenocarcinoma. *Diagnostic Pathology*, 10:28.
- Jung B., Yoo H., Shin S., Park Y. and Jeon S. (2018). Dysregulation of NRF2 in Cancer: from Molecular Mechanisms to Therapeutic Opportunities. *Biomol Ther*, 26(1): 57-68.
- Lister A., Nedjadi T., Kitteringham N., Campbell F., Costello E., Lloyd B., Ian M Copple, Samantha Williams, Andrew Owen, John P Neoptolemos, Chris E Goldring, and B Kevin Park (2011). Nrf2 is overexpressed in pancreatic cancer: implications for cell proliferation and therapy. *Mol cancer*, 10:37.
- Ohta T., Iijima K., Miyamoto M., Nakahara I., Tanaka H., Ohtsuji M., Suzuki T., Kobayashi A., Yokota J., Sakiyama T., Tatsuhiro Shibata S., Yamamoto M., and Hirohashi S. (2008). Loss of Keap1 Function Activates Nrf2 and Provides Advantages for Lung Cancer Cell Growth. *Cancer Res*, 68 (5): 1303-1309.
- Ondodera Y., Motohashi H., Takagi K., Miki Y., Shibahara Y., Watanabe M., Ishida T., Hirakawa H., Sasano H., Yamamoto M. and Suzuki T. (2014). NRF2 immunolocalization in human breast cancer patients as a prognostic factor. *Endocr Relat Cancer*, 21(2), 241-252.
- Purohit V., Wang L., Yang H., Li J., Ney G., Gumkowski E., Akash J. Vaidya, Annie Wang, Amit Bhardwaj, Ende Zhao, Igor Dolgalev, Andrea Zamperone, Ethan V. Abel, Marina Pasca Di Magliano, Howard C. Crawford, Daniel Diolaiti, Thales Y. Papagiannakopoulos, Costas A. Lyssiotis and Diane M. Simeone (2020). ATDC binds to KEAP1 to drive NRF2-mediated tumorigenesis and chemoresistance in pancreatic cancer. *Genes Dev*, 35:218-233.
- Shen H., Yang Y., Xia S., Rao B., Zhang J., and Wang J. (2013). Blockage of Nrf2 suppresses the migration and invasion of esophageal squamous cell carcinoma cells in hypoxic microenvironment. *Dis Esophagus*, 27(7): 685-692.
- Taguchi K., Motohashi H. and Yamamoto M. (2011). Molecular mechanisms of the Keap1-Nrf2 pathway in stress response and cancer evolution. *Genes Cells*, 16(2): 123-140.
- Telkoparan-Akillilar P., Panieri E., Cevik D., Suzen S. and Saso L. (2021). Therapeutic Targeting of the NRF2 Signaling Pathway in Cancer. *Molecules*, 26(5): 1417.
- Zhang J., Hua R., Sun Y., Liu W., Huo Y., Liu D., and Li J. (2013). Influence of Perineural Invasion on Survival and Recurrence in Patients with Resected Pancreatic Cancer. *Asian Pac J Cancer Prev*, 14 (9): 5133-5139.